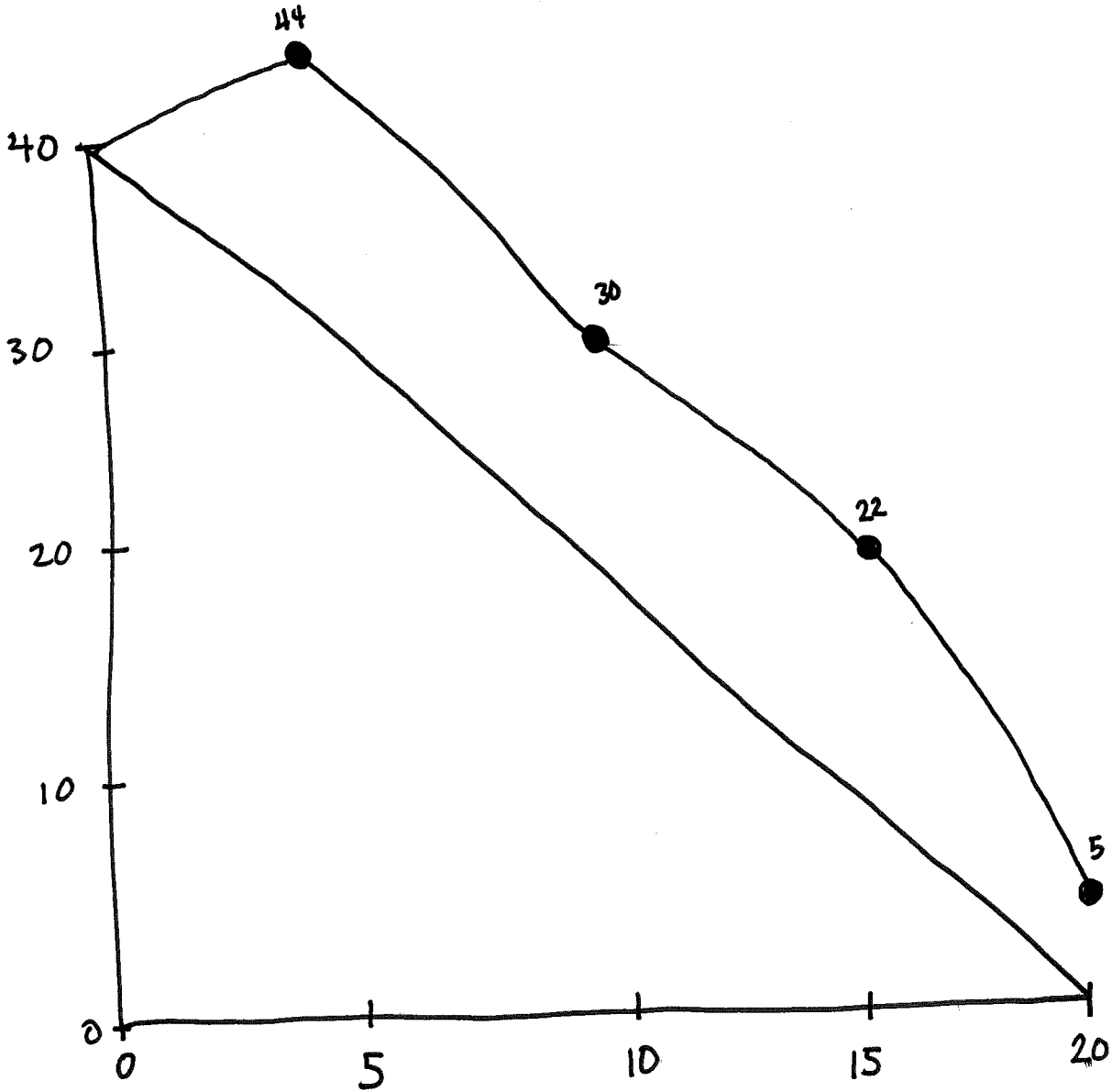


## Chapter 4 Quiz

1. [6pts] Draw a burn-down graph as follows:
  - a. 20-day iteration with an initial estimate of 40 days of work.
  - b. On day 5 there is 44 days of work left.
  - c. On day 10 there is 30 days of work left.
  - d. On day 15 there is 22 days of work left.
  - e. On day 20 there is 5 days of work left.



2. [1pts] How many days should tasks be generally?

$\frac{1}{2}$  to 5 days

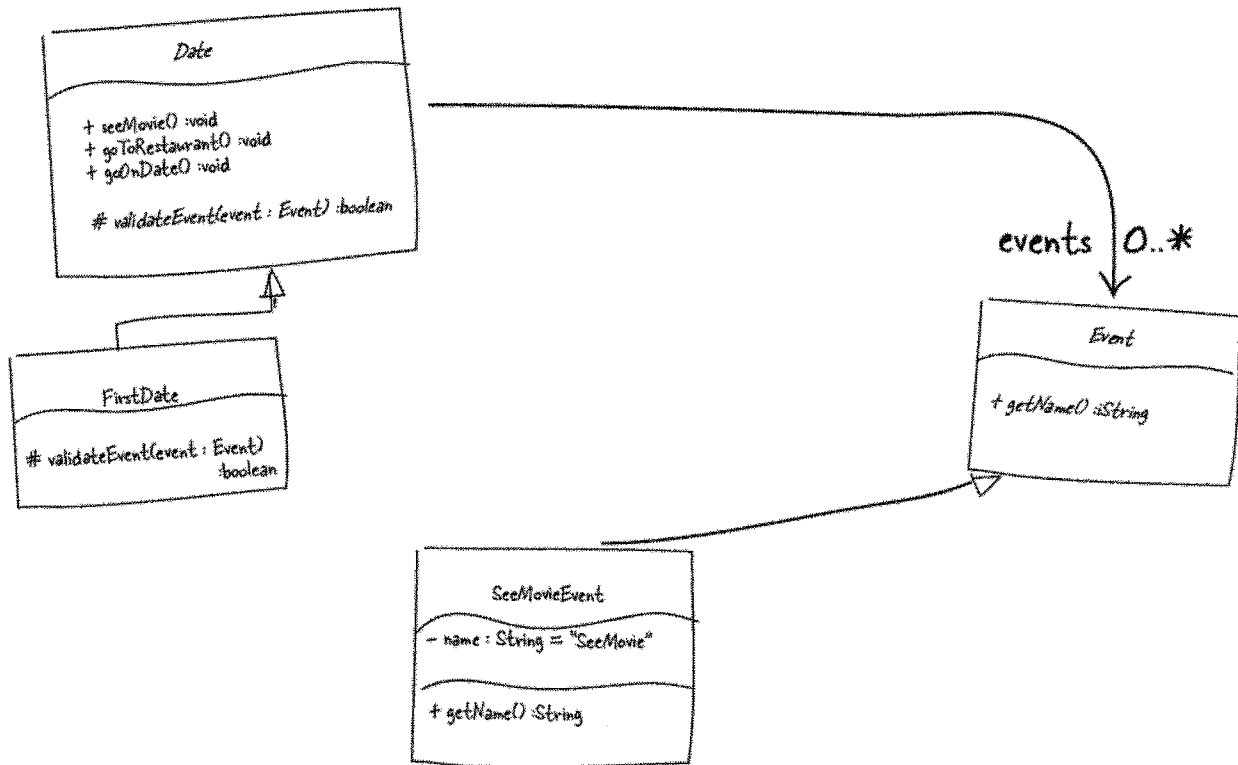
3. [1pts] How long should a standup meeting last?

5 to 15 minutes

4. [1pts] T or F? When you plan the tasks for a user story, your total time estimate for the tasks will always equal your previously produced time estimate for the user story.

F. Task breakdowns are more in-depth and may cause your user story estimates to change.

5. [9pts] On the next page, create a Java code skeleton based on the following class diagram. Fill in as much of the skeleton as is described in the diagram. Use an array to store the events.



```

public abstract class Date {
    Event[] events;
    public void seeMovie() { ... }
    public void goToRestaurant() { ... }
    public void goOnDate() { ... }
    protected boolean validateEvent(Event event);
}

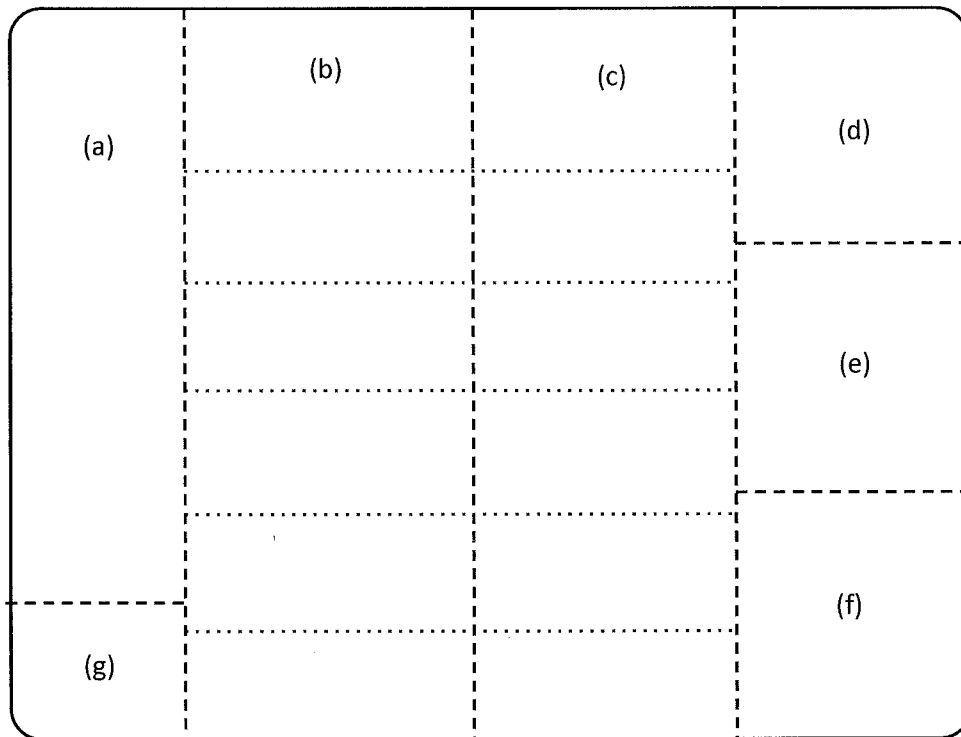
public class FirstDate extends Date {
    protected boolean validateEvent(Event event) { ... }
}

public abstract class Event {
    public String getName();
}

public class SeeMovieEvent extends Event {
    private String name = "SeeMovie";
    public String getName() { ... }
}

```

6. [7pts] Tell what goes in each section of a project “big board”.



- (a) User stories and task to be worked on this iteration.
- (b) Tasks in progress
- (c) Tasks completed
- (d) Burn down graph
- (e) User stories bumped to next iteration
- (f) Completed user stories
- (g) Unplanned tasks