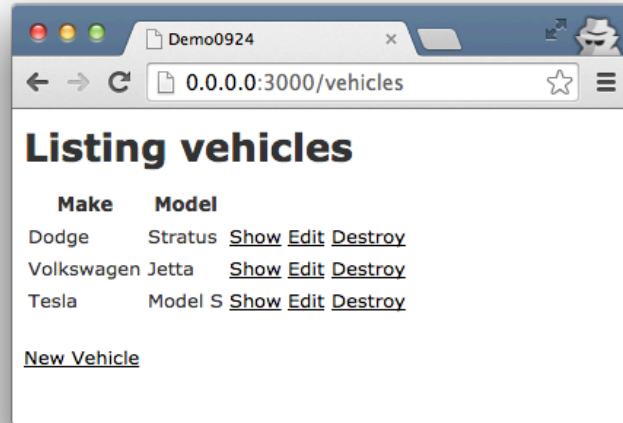
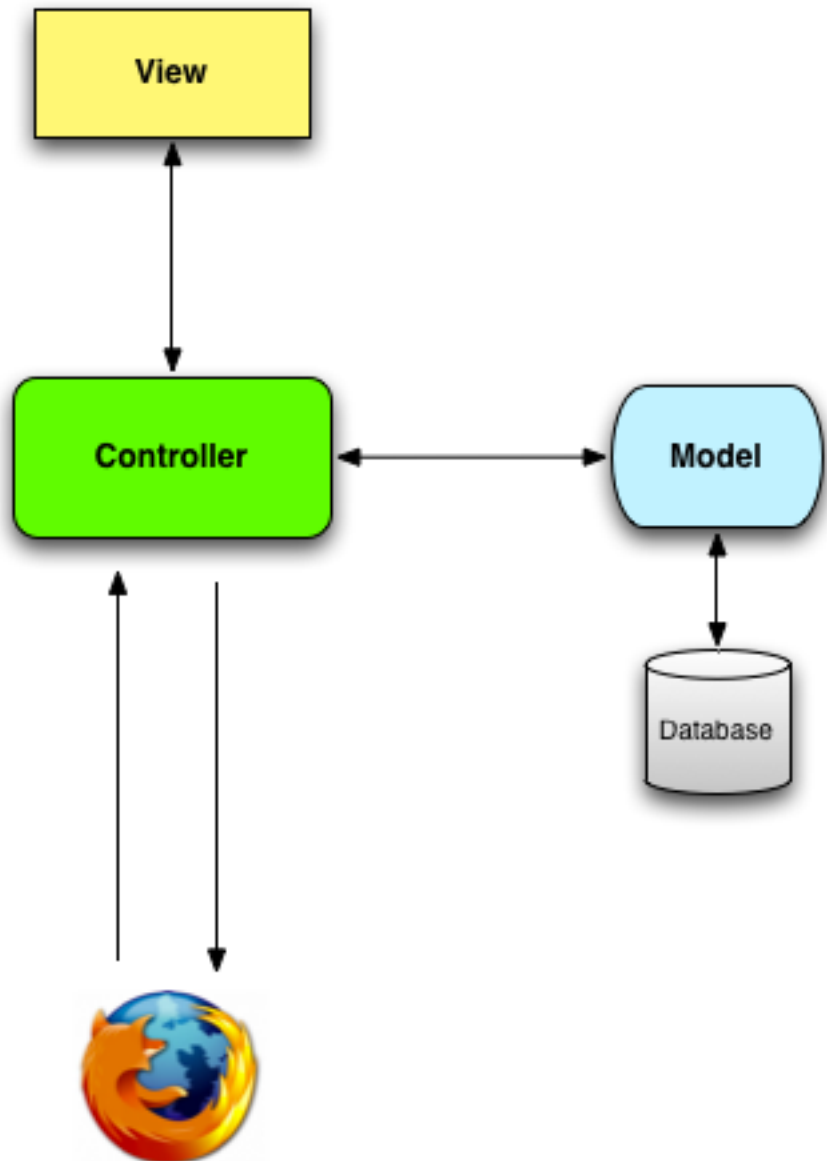


Rails MVC Quiz

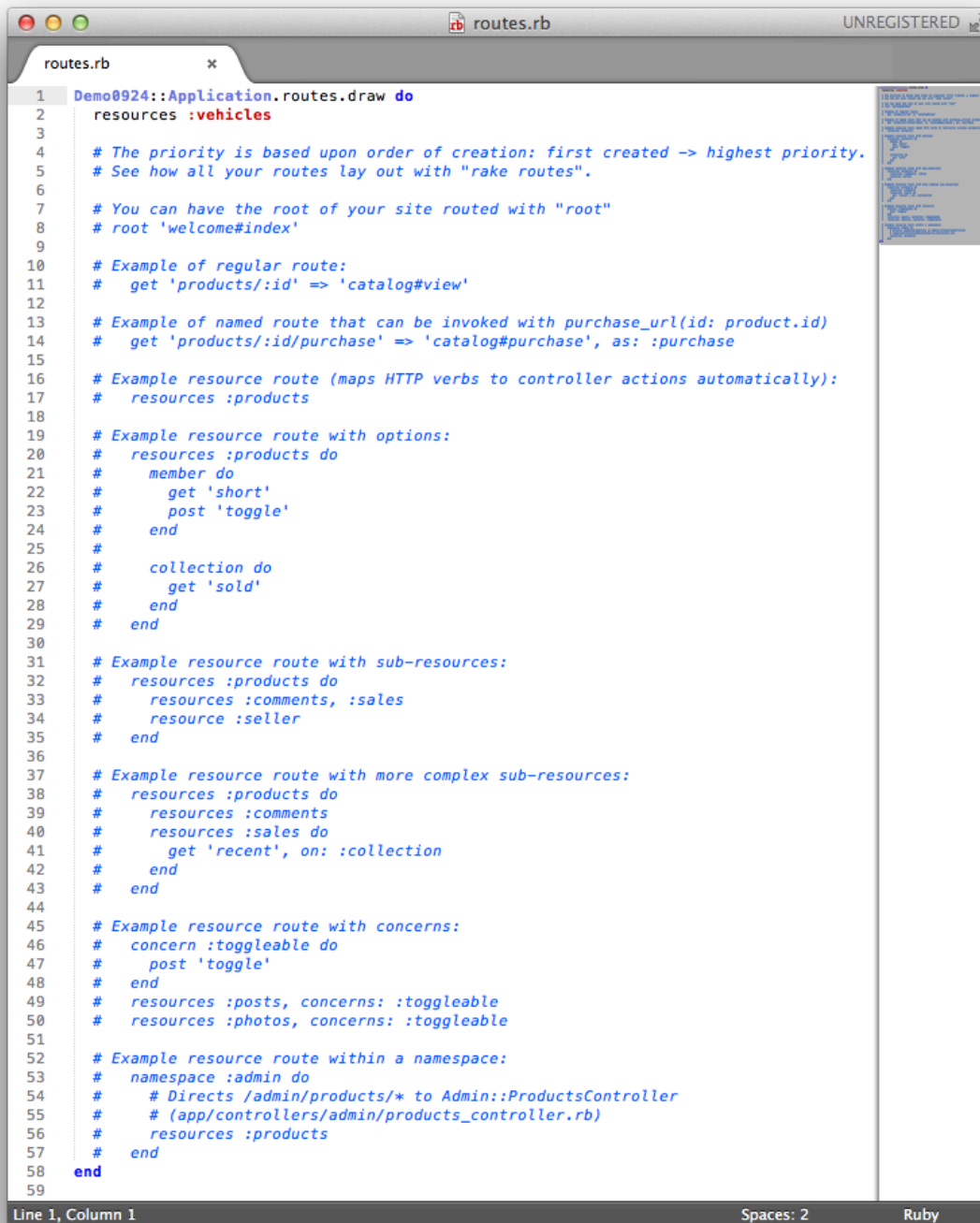
Consider this page from a Rails web app...



And this MVC diagram...



1.



```
1 Demo0924::Application.routes.draw do
2   resources :vehicles
3
4   # The priority is based upon order of creation: first created -> highest priority.
5   # See how all your routes lay out with "rake routes".
6
7   # You can have the root of your site routed with "root"
8   # root 'welcome#index'
9
10  # Example of regular route:
11  # get 'products/:id' => 'catalog#view'
12
13  # Example of named route that can be invoked with purchase_url(id: product.id)
14  # get 'products/:id/purchase' => 'catalog#purchase', as: :purchase
15
16  # Example resource route (maps HTTP verbs to controller actions automatically):
17  # resources :products
18
19  # Example resource route with options:
20  # resources :products do
21  #   member do
22  #     get 'short'
23  #     post 'toggle'
24  #   end
25  #
26  #   collection do
27  #     get 'sold'
28  #   end
29  # end
30
31  # Example resource route with sub-resources:
32  # resources :products do
33  #   resources :comments, :sales
34  #   resource :seller
35  # end
36
37  # Example resource route with more complex sub-resources:
38  # resources :products do
39  #   resources :comments
40  #   resources :sales do
41  #     get 'recent', on: :collection
42  #   end
43  # end
44
45  # Example resource route with concerns:
46  # concern :toggleable do
47  #   post 'toggle'
48  # end
49  # resources :posts, concerns: :toggleable
50  # resources :photos, concerns: :toggleable
51
52  # Example resource route within a namespace:
53  # namespace :admin do
54  #   # Directs /admin/products/* to Admin::ProductsController
55  #   # (app/controllers/admin/products_controller.rb)
56  #   resources :products
57  # end
58 end
59
```

Line 1, Column 1 Spaces: 2 Ruby

Where does this file fit into the MVC diagram?
What is this code's purpose?

2.

```
vehicles_controller.rb x
1 class VehiclesController < ApplicationController
2   before_action :set_vehicle, only: [:show, :edit, :update, :destroy]
3
4   # GET /vehicles
5   # GET /vehicles.json
6   def index
7     @vehicles = Vehicle.all
8   end
9
10  # GET /vehicles/1
11  # GET /vehicles/1.json
12  def show
13  end
14
15  # GET /vehicles/new
16  def new
17    @vehicle = Vehicle.new
18  end
19
20  # GET /vehicles/1/edit
21  def edit
22  end
23
24  # POST /vehicles
25  # POST /vehicles.json
26  def create
27    @vehicle = Vehicle.new(vehicle_params)
28
29    respond_to do |format|
30      if @vehicle.save
31        format.html { redirect_to @vehicle, notice: 'Vehicle was successfully created.' }
32        format.json { render action: 'show', status: :created, location: @vehicle }
33      else
34        format.html { render action: 'new' }
35        format.json { render json: @vehicle.errors, status: :unprocessable_entity }
36      end
37    end
38  end
39
40  # PATCH/PUT /vehicles/1
41  # PATCH/PUT /vehicles/1.json
42  def update
43    respond_to do |format|
44      if @vehicle.update(vehicle_params)
45        format.html { redirect_to @vehicle, notice: 'Vehicle was successfully updated.' }
46        format.json { head :no_content }
47      else
48        format.html { render action: 'edit' }
49        format.json { render json: @vehicle.errors, status: :unprocessable_entity }
50      end
51    end
52  end
53
54  # DELETE /vehicles/1
55  # DELETE /vehicles/1.json
56  def destroy
57    @vehicle.destroy
58    respond_to do |format|
59      format.html { redirect_to vehicles_url }
60      format.json { head :no_content }
61    end
62  end
63
64  private
65  # Use callbacks to share common setup or constraints between actions.
66  def set_vehicle
67    @vehicle = Vehicle.find(params[:id])
68  end
69
70  # Never trust parameters from the scary internet, only allow the white list through.
71  def vehicle_params
72    params.require(:vehicle).permit(:make, :model)
73  end
74 end
75
```

Line 8, Column 6 Spaces: 2 Ruby

Where does this file fit into the MVC diagram?

What part(s) of this code are related to the web page?

How does that code work? How does it connect to other parts of the MVC diagram?

3.



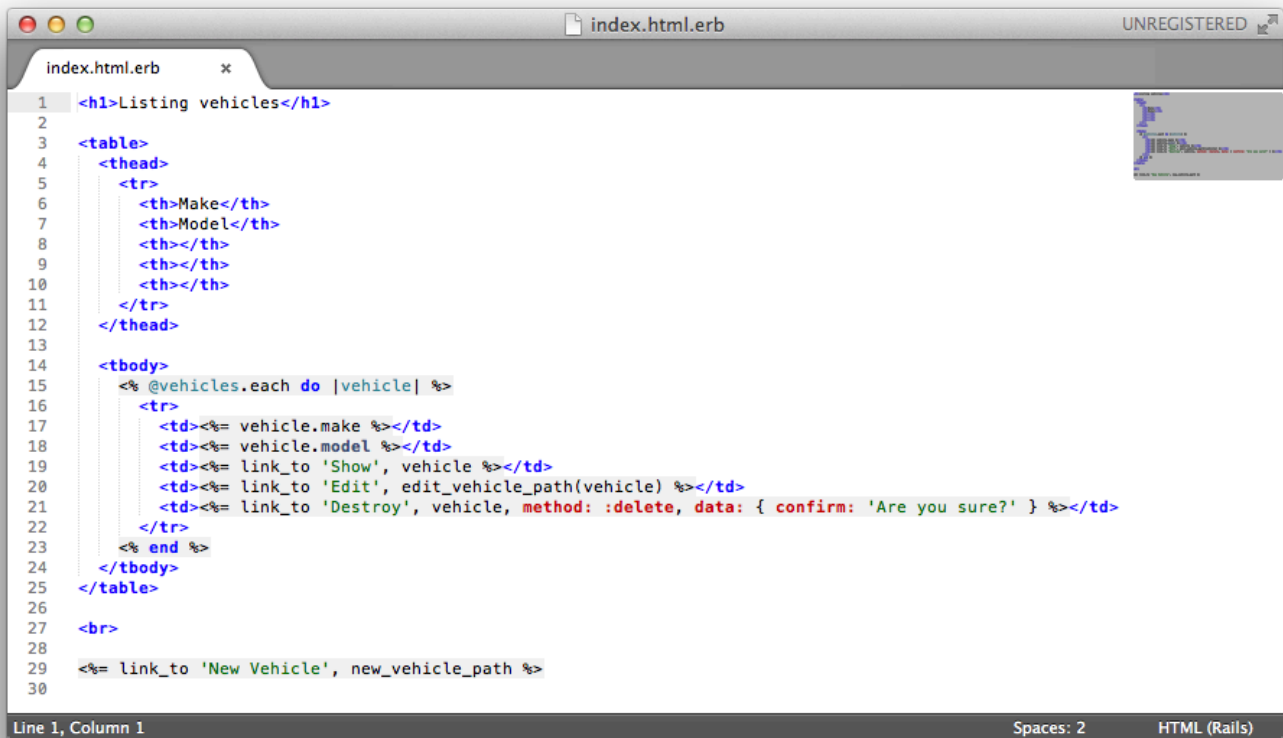
```
vehicle.rb
1 # == Schema Information
2 #
3 # Table name: vehicles
4 #
5 # id      :integer      not null, primary key
6 # make   :string(255)
7 # model  :string(255)
8 # created_at :datetime
9 # updated_at :datetime
10 #
11
12 class Vehicle < ActiveRecord::Base
13 end
14
```

Line 14, Column 1 Tab Size: 4 Ruby

Where does this file fit into the MVC diagram?

How does this code work? How does it connect to other parts of the MVC diagram?

4.



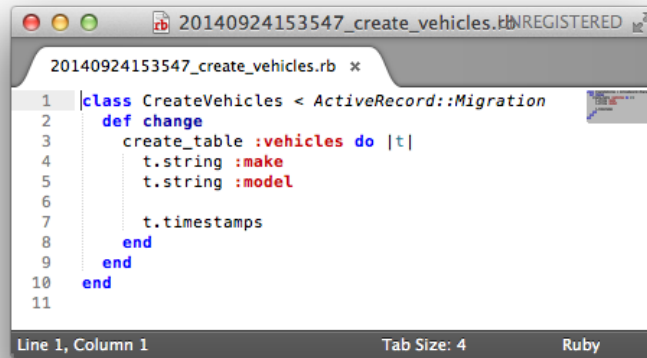
```
index.html.erb
1 <h1>Listing vehicles</h1>
2
3 <table>
4   <thead>
5     <tr>
6       <th>Make</th>
7       <th>Model</th>
8       <th></th>
9       <th></th>
10      <th></th>
11    </tr>
12  </thead>
13
14  <tbody>
15    <%= @vehicles.each do |vehicle| %>
16      <tr>
17        <td><%= vehicle.make %></td>
18        <td><%= vehicle.model %></td>
19        <td><%= link_to 'Show', vehicle %></td>
20        <td><%= link_to 'Edit', edit_vehicle_path(vehicle) %></td>
21        <td><%= link_to 'Destroy', vehicle, method: :delete, data: { confirm: 'Are you sure?' } %></td>
22      </tr>
23    <%= end %>
24  </tbody>
25 </table>
26
27 <br>
28
29 <%= link_to 'New Vehicle', new_vehicle_path %>
30
```

Line 1, Column 1 Spaces: 2 HTML (Rails)

Where does this file fit into the MVC diagram?

How does this code work? How does it connect to other parts of the MVC diagram?

5.



```
1 class CreateVehicles < ActiveRecord::Migration
2   def change
3     create_table :vehicles do |t|
4       t.string :make
5       t.string :model
6
7       t.timestamps
8     end
9   end
10 end
11
```

Line 1, Column 1 Tab Size: 4 Ruby

Where does this file fit into the MVC diagram?

How does this code work? How does it connect to other parts of the MVC diagram?

